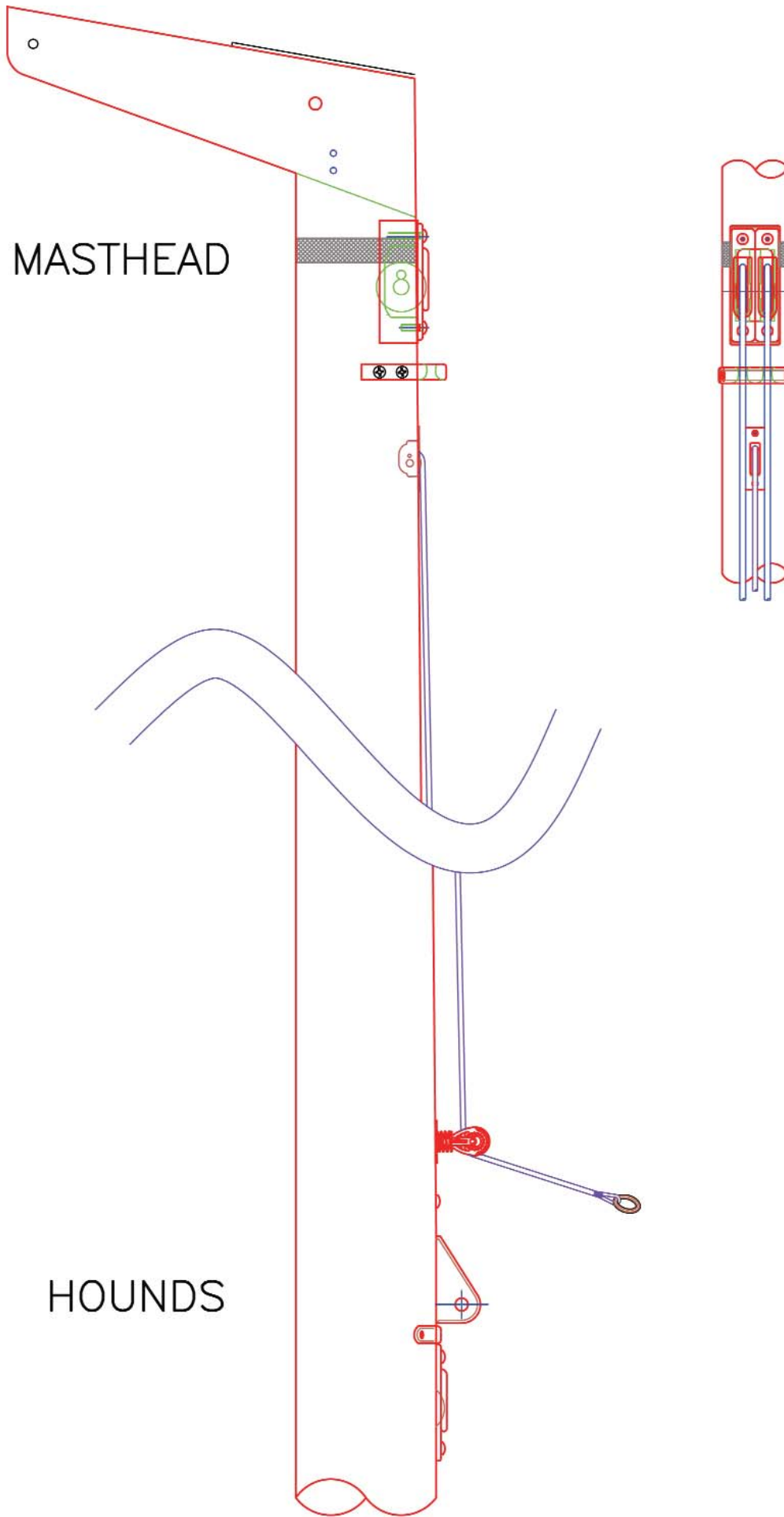
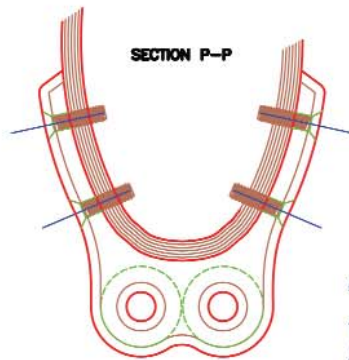
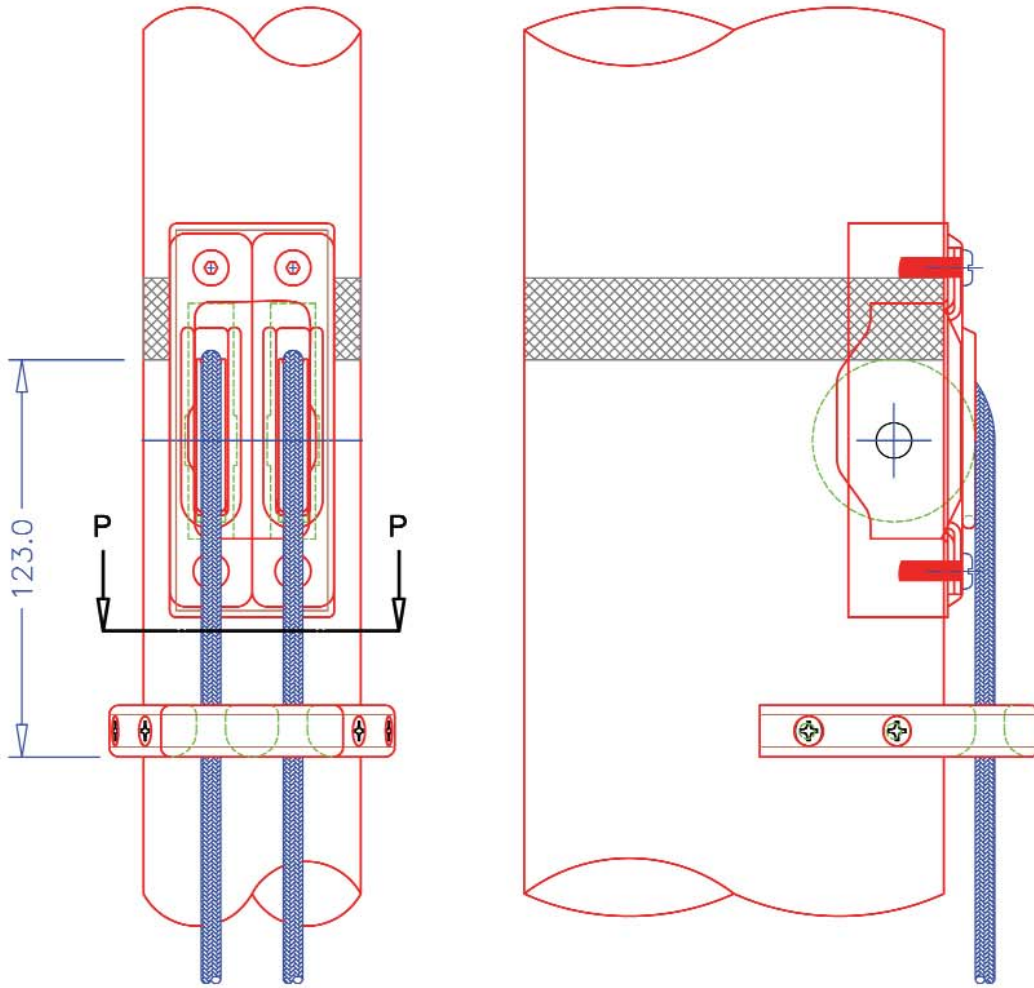


**APPENDIX 8  
MELGES 32 CLASS RULES  
SPINNAKER HALYARD RETAINER**



APPENDIX 9  
MELGES 32 CLASS RULES  
SPINNAKER HALYARD DEFLECTOR



DRILL AND TAP MAST  
FOR 10-24 X 3/4" FLAT HEAD  
QTY: 4

ASSEMBLY NOTES:

1. TAPE THE AREA WITH MASKING TAPE BEFORE PROCEEDING
2. MARK OUT POSITION: 123mm BELOW TOP BAND
3. CHECK THE FIT OF THE DEFLECTOR ON THE SECTION
4. MANIPULATE THE ARMS TO SUIT IF NECESSARY
5. MARK THE HOLE CENTRES AND DRILL  $\phi 4.0\text{mm}$  ( $\phi 5/32''$ )
6. TAP THE HOLES WITH 10-24 UNC THREAD
7. REMOVE MASKING TAPE
8. FASTEN THE SCREWS IN WITH BLUE LOCTITE

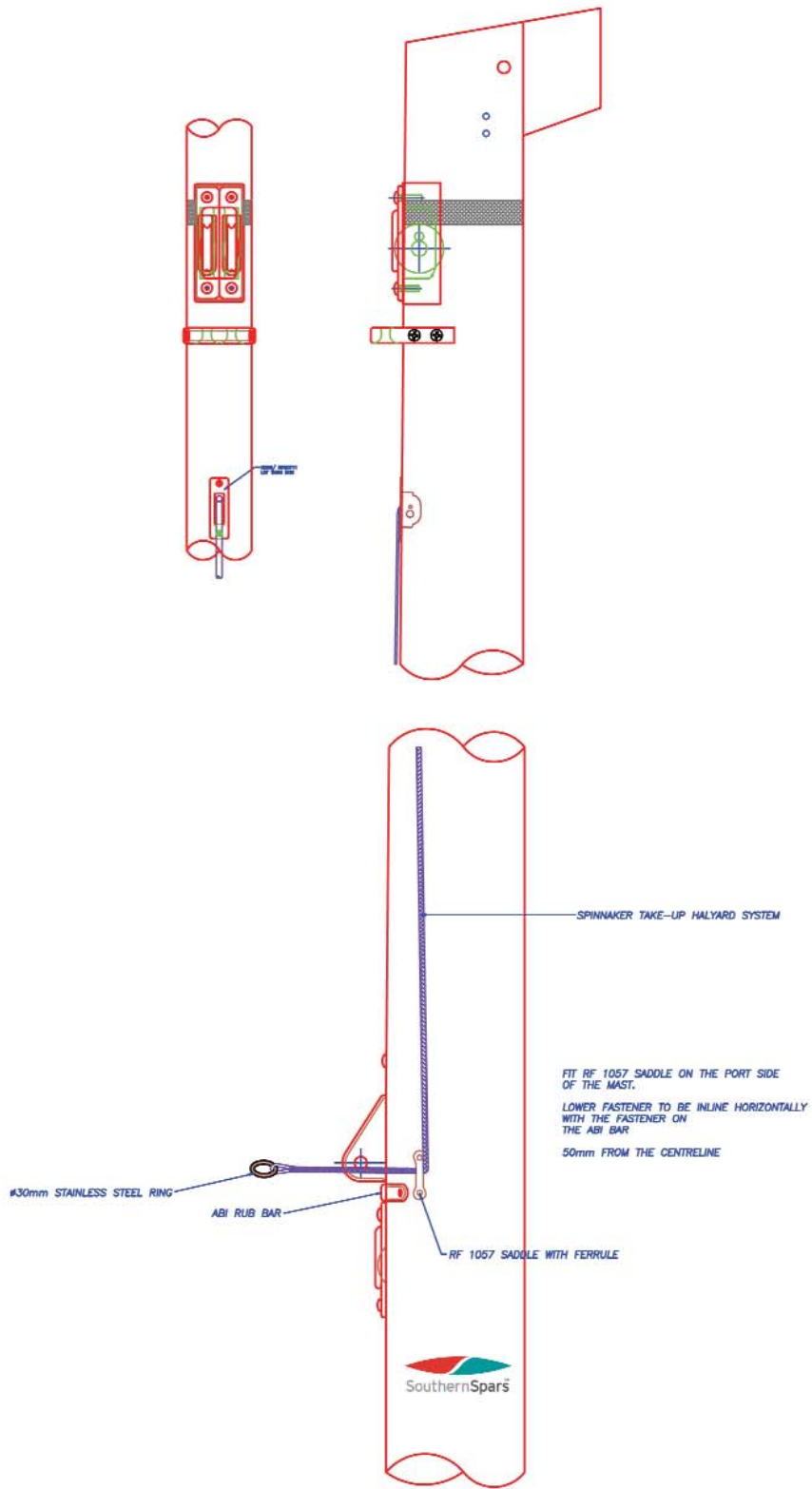
10 b.

REVISION DETAILS		DRAWN	CHECKED
# 1	DATE_1	DWN_1	CHK_1
	DETAILS_1		CHK_2

  
**SouthernSpars™**  
 PHONE: 027 21 886476, FAX: 027 21 886471  
 EMAIL: josh@southernspars.com  
[www.southernspars.com](http://www.southernspars.com)

MASTHEAD SPIN DEFLECTOR					
MELGES BOATWORKS					
MELGES 32					
PROJECT CO-OWNER	OWNER	DESIGNER	SCALE	PAPER	SIZE
JNW	GRW		3.5"	CARB NTS	A4
JOB No.	DATE				
	17/05/2007				

**APPENDIX 10  
MELGES 32 CLASS RULES  
SPINNAKER TAKE-UP**



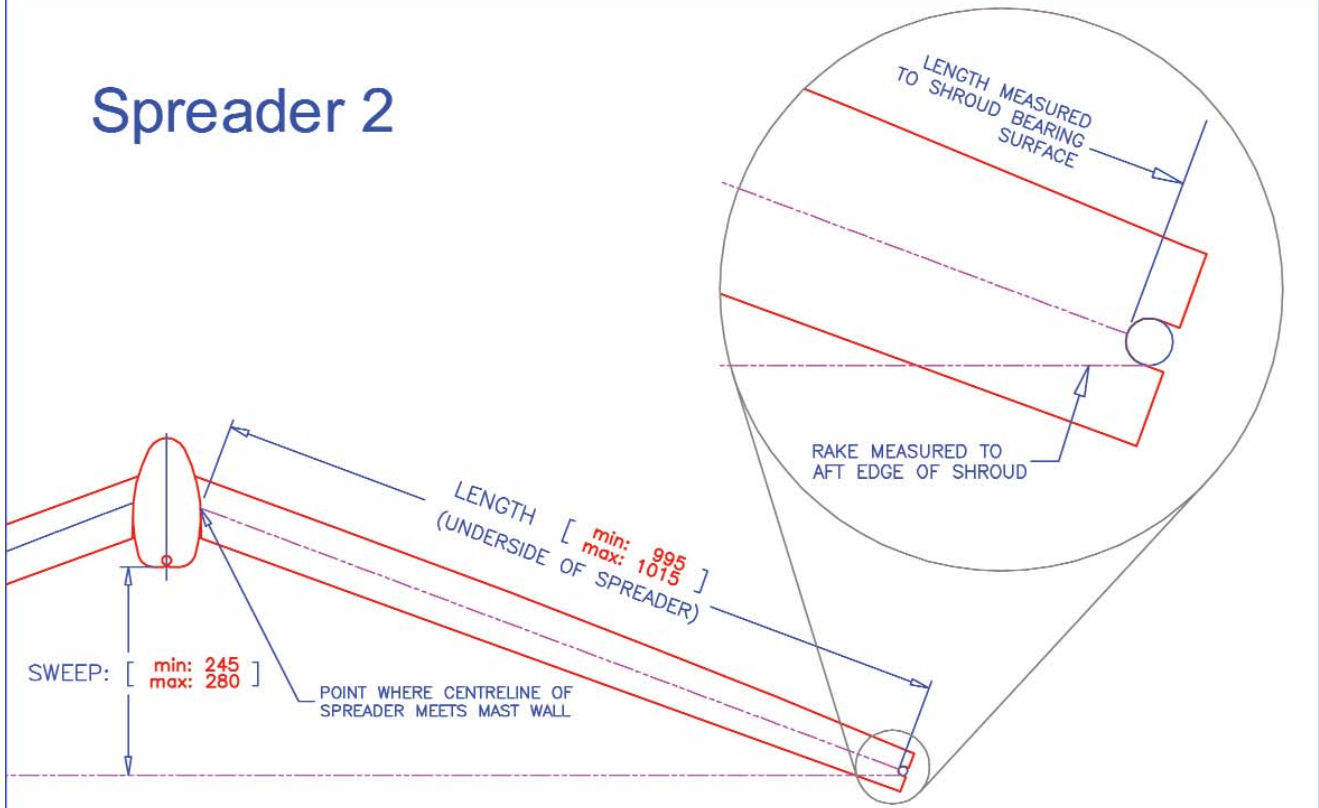
REVISION DETAILS		DRAWN	CHECKED
# 1	26/05/08 UPDATED TO LATEST VERSION	CRJ	JNW



PHONE: 017 21 88000, 010 017 21 88001  
EMAIL: josh@spars.com.au

<b>TITLE</b> SPINNAKER TAKE-UP SYSTEM					
<b>DESIGNER</b> MELGES BOATWORKS MELGES 32					
<b>PROJECT CO-ORDINATOR</b> JNW	<b>DRAWN</b> CRJ	<b>SCALE</b> 3.5	<b>SCALE</b> 1:1	<b>SIZE</b> A4	
<b>JOB NO.</b>	<b>DATE</b> 26/05/2008				

## Spreader 2



## Spreader 1

